

JATSO

JOPLIN AREA TRANSPORTATION STUDY ORGANIZATION

FISCAL YEAR 2010 **UNIFIED PLANNING WORK PROGRAM** **NOVEMBER 1, 2009 TO OCTOBER 31, 2010**

**City of Joplin
Department of Public Works
Division of Planning & Community Development
602 Main Street
Joplin, Missouri 64804
(417) 624-0820**

TABLE OF CONTENTS

List of Abbreviations.....2

Introduction.....3

Task 1 - Transportation Improvement Program.....7

Task 2 - Unified Planning Work Program.....8

Task 3 - Geographic Information Systems.....9

Task 4 - Transit Planning.....10

Task 5 – Long Range Transportation Plan.....11

Task 6 - Programs, Software, & Hardware.....12

Task Funding Summary.....13

Expense Summary.....14

JATSO Organizational Chart.....15

JATSO Boundary Map.....16

LIST OF ABBREVIATIONS

CPG	Consolidated Planning Grant
FHWA	Federal Highway Administration
FTA	Federal Transit Administration
FY	Fiscal Year
GIS	Geographic Information Systems
JATSO	Joplin Area Transportation Study Organization
MAPS	Metropolitan Area Publictransit System
MoDOT	Missouri Department of Transportation
MOU	Memorandum of Understanding
MPO	Metropolitan Planning Organization
O & D	Origin & Destination Study
PIP	Public Involvement Process
SAFETEA-LU	Safe, Accountable, Flexible, Efficient Transportation Equity Act - A Legacy for Users
TIP	Transportation Improvement Program
UPWP	Unified Planning Work Program

INTRODUCTION

Purpose

The Joplin area transportation planning process is an on-going effort that constitutes a branch of activities developed by the Joplin Planning Division and the Public Works Department. The purpose is to analyze and evaluate various types of data (such as demographic, socio-economic, land use and scientific) in order to provide a rational basis for making short-range and long-range decisions about transportation needs in the Joplin metropolitan area. The planning process identifies present and future needs, and develops plans, policies, and projects to carry out objectives identified in the long-range transportation plan.

The transportation planning process is required by federal regulations as a prerequisite to the receipt of federal capital and operating assistance. The end result from this continuing, cooperative, and comprehensive process will include plans and programs that match and enhance the comprehensively planned development of the metropolitan area. In addition, the planning process and requirements mandated by the enacted by the Safe, Accountable, Flexible, Efficient Transportation Equity Act – A Legacy for Users (SAFETEA-LU) will be addressed as part of the Joplin Area Transportation Study Organization's (JATSO) planning activities.

Organization

On May 20, 1983, Governor Christopher Bond of Missouri signed the letter of approval designating the JATSO as the Metropolitan Planning Organization (MPO) for the Joplin metropolitan area under Title 23 of the U.S. Code.

The MPO has designated the City of Joplin as the contracting agent for service agreements involving federal planning funds from the Federal Highway Administration (FHWA) and the Federal Transit Administration (FTA). The Harry S. Truman Coordinating Council, the local regional planning commission, represents at JATSO the smaller villages and unincorporated areas in the metropolitan planning area. The JATSO organization consists of six members from the City of Joplin, one member from Harry S. Truman Coordinating Council, Webb City, Carl Junction, MoDOT District 7, Newton County, and Jasper County.

The organization and responsibilities of the various agencies involved in the transportation planning process are defined in this Unified Planning Work Program (UPWP), the Memorandum of Understanding, and the JATSO bylaws.

Funding for the UPWP

Funding for the UPWP comes from three sources: the Federal Highway Administration (FHWA), the Federal Transit Administration (FTA), and the City of Joplin. FHWA Planning funds and FTA 5303 are combined into one category, called a Consolidated Planning Grant (CPG), and provide 80 percent of the UPWP funds. The remaining 20 percent comes from the City of Joplin general revenue funds.

Planning Factors

The metropolitan transportation planning process shall be continuous, cooperative, and comprehensive. It shall provide for consideration and implementation of projects, strategies and services that will address the following eight factors:

1. Support the economic vitality of the Joplin metropolitan area, especially by enabling global competitiveness, productivity and efficiency;
2. Increase the safety of the transportation system for motorized and non-motorized users;
3. Increase the security of the transportation system for motorized and non-motorized users;
4. Increase the accessibility and mobility of people and freight;
5. Protect and enhance the environment, promote energy conservation, improve the quality of life and promote consistency between transportation improvements and State and local planned growth and economic development patterns;
6. Enhance the integration and connectivity of the transportation system, across and between modes, for people and freight;
7. Promote efficient system management and operation; and
8. Emphasize the preservation of the existing transportation system.

Eligible Items

There are a number of activities that are considered eligible for transportation planning funds. These include street inventories, map preparation, aerial photography and photogrammetry, traffic volume studies, land use studies, and other studies that support the transportation planning process. Other eligible activities include systems development and project planning, economic and fiscal studies related to streets, project evaluation studies, and compilation of reference statistics.

Public Involvement Plan

The purpose for the Public Involvement Plan (PIP) is to involve the public in the planning process, since the purpose of regional planning is to meet public mobility needs. The PIP outlines a process for the public comments on the LRTP, TIP, UPWP, Title VI/ Environmental Justice and at public meetings. A paper copy of the PIP can be acquired at Joplin City Hall, Metropolitan Area Public transit System (MAPS) office and vehicles, Webb City City Hall, Carl Junction City Hall, and Harry S. Truman Coordinating Council offices. An electronic copy of the PIP can be obtained at the JATSO website www.jatso.net.

Tasks Completed in FY 2009 UPWP

Transportation Improvement Program (TIP)

- Staff amended the JATSO FY 2009-2012 TIP to include the addition of 13 MoDOT, four Transportation Enhancements, one Safe Route to School, and one Transit Projects.
- Staff maintained and monitored the projects in the JATSO FY 2009-2012 TIP.

Unified Planning Work Program (UPWP)

- Staff carried out projects in the FY 2009 UPWP.
- Staff prepared quarterly reports to MoDOT for ONEDOT approval.
- Staff revised the Public Involvement Plan (PIP).

Geographic Information Systems (GIS)

- Staff maintained and updated GIS layers utilized by JATSO.

Transit Planning

- Staff monitored the MAPS transit system and collected data and information.
- Staff extended the MAPS transit route system.

Aerial Flyover

- The consultant, Pictometry International, completed the aerial photography. The study looked to improve traffic flow through better coordination of municipal and state traffic signals.

Programs, Software & Hardware

- Purchased the TransCAD software and plan to have a consultant work on the calibration and the construction of the Transportation Model

Transportation Studies

- Purchased five transportation counters for the MPO

JATSO Website Development

- Staff completed an interactive website that made transportation planning, bicycle and pedestrian, and land use documents accessible to the public. The website promoted public involvement by providing planning documents in which the public could comment on and provided notification for upcoming meetings. The JATSO website address is www.jatso.net.

FY 2010 Program Goals

The annual transportation planning program begins on November 1, 2009 and continues through October 31, 2010. The UPWP is directed toward the continuation and improvement of existing activities and the development of those activities mandated by federal regulations. For fiscal year 2010, JATSO goals are:

- Improve transportation through better cooperation and communication from JATSO, MoDOT, and ONEDOT.
- Hire a consultant to conduct an updated long-range transportation plan that will assist future in future planning activities. The LRTP should focus on growth to the west, reducing traffic congestion, and freight movement. The plan will be completed by the end of FY 2010.
- Hire a consultant to construct and calibrate a transportation model using the TransCAD software. The anticipated completion will be at the end of FY 2010.
- Examine road capacity by purchasing the transportation model in October 2009 and train JATSO staff on how to use the hardware in FY 2010.
- Increase participation in JATSO by holding more meetings, giving presentations, and increase advertising.

The UPWP annual program consists of the tasks on the following pages.

TASK 1. Transportation Improvement Program

Objective: JATSO staff will develop a fiscally constrained area-wide listing of transportation improvement projects inside the Joplin metropolitan area for a four-year period that is consistent with JATSO's long-range transportation plan.

Current Status: The JATSO FY 2010-2013 TIP was produced by the City of Joplin, Harry S. Truman Coordinating Council, the Missouri Department of Transportation (MoDOT) and other local governments.

Work Items:

- *Administration* – 75% (\$5,351)
 - Monitor and maintain the FY 2010-2013 TIP (\$1,000)
 - Amend FY 2010-2013 TIP when new projects are added (\$ 1,431)
 - Prepare FY 2011-2014 TIP (\$2,700)
 - Prepare the FY 2009 Annual Listing of Obligated Projects (\$ 220)
- *Outreach* – 25% (\$ 1,784)
 - Conduct Public Meetings

Public Participation:

- Prior to adopting a TIP a public meeting will be held by the Policy Board. The Notice of a public meeting will be published seven (7) days in advance of the public meeting in the newspaper. Any amendments to the TIP will be published seven (7) days in advance on the JATSO website. The public is encouraged to formulate comments regarding the TIP document.

End Products:

- One (1) JATSO FY 2011-2014 TIP
- TIP amendments (as necessary)
- Prepare the FY 2009 Annual Listing of Obligated Projects

Schedule for Completion:

- Activities will be on-going from November 2009 through October 2010.

Budget:

<u>Total Cost</u>	<u>Federal Funds (80%)</u>	<u>Local Funds (20%)</u>
\$ 7,135	\$ 5,708 (CPG Funds)	\$ 1,427 (Joplin)

TASK 2. Unified Planning Work Program

Objective: JATSO staff will maintain the approved UPWP for the current fiscal year 2010 and develop the 2011 UPWP.

Current Status: This task is on-going with activities occurring on a day-to-day or on-demand basis.

Work Items:

- Administration – 75% - (\$ 34,673)
 - Monitor and maintain the FY 2010 UPWP (\$ 6,587)
 - Prepare FY 2010 quarterly progress reports (\$15,386)
 - Prepare the FY 2011 UPWP (\$ 8,500)
 - Document all MPO activities (\$ 4,200)
- Outreach – 25% (\$ 11,557)
 - Conduct public meetings (\$ 7,348)
 - Create informational brochures (\$ 1,861)
 - Ensure agencies receiving federal transportation funds maintain accurate financial records (\$ 2,348)

Public Participation:

- Prior to adopting a Unified Planning Work Program a public meeting will be held by the Policy Board. The Notice of a public meeting will be published seven (7) days in advance of the public meeting in the newspaper. Any amendments to the UPWP will be published seven (7) days in advance on the JATSO website. The public is encouraged to formulate comments regarding the UPWP document.

End Products:

- Four (4) FY 2010 quarterly progress reports
- One (1) JATSO FY 2011 UPWP

Schedule for Completion:

- Activities will be on-going from November 2009 through October 2010.

Budget:

<u>Total Cost</u>	<u>Federal Funds (80%)</u>	<u>Local Funds (20%)</u>
\$ 46,230	\$ 36,984 (CPG Funds)	\$ 9,246 (Joplin)

TASK 3. Geographic Information Systems (GIS)

Objective: JATSO staff will work with the City of Joplin, the Harry S. Truman Coordinating Council, and other local governments and agencies to update and create databases and collect and input data into the JATSO's GIS.

Current Status: The City of Joplin updates zoning maps within the Joplin corporate boundaries. Census information, other socio-economic data, and additional transportation data of the Joplin area is inserted into GIS databases as it becomes available.

Work Items:

- Administration – 80% - (\$ 28,540)
 - Maintain and update GIS layers used by JATSO, the Metro Area Publictransit System (MAPS), the Harry S. Truman Coordinating Council and local governments and agencies.
- Consultant – 20 % - (\$7,200)
 - Update the GIS files for the JATSO interactive website

End Products:

- Maintained GIS layers
- Updated street, subdivision, zoning, and property ownership layers.
- Updated aerial photography and contour, flood plain, census, environmental and traffic count layers
- A new aerial layer of the JATSO area
- A new subdivision layer of the City of Joplin
- A master street plan layer
- Update GIS files for the JATSO interactive website

Schedule for Completion:

- Activities will be on-going from November 2009 through October 2010.

Budget:

<u>Total Cost</u>	<u>Federal Funds (80%)</u>	<u>Local Funds (20%)</u>
\$ 35,740	\$ 28,592 (CPG Funds)	\$ 7,148 (Joplin)

TASK 4. Transit Planning

Objective:

- JATSO staff will provide program and administrative support for the Metropolitan Area Publictransit System (MAPS).
- JATSO staff will complete long and short-range transit planning responsibilities, including, maintenance of the Coordinated Public Transit – Human Services Transportation Plan.

Current Status:

- JATSO continues to assist MAPS with program support and administration.

Work Items:

- *Administration – 100% - (\$50,061)*
 - The MAPS transit coordinator collects and records transit data and information and reports the data findings to local and federal government agencies. (\$13,517)
 - The MAPS transit coordinator and JATSO staff use data and information to complete short and long-range planning responsibilities. (\$ 18,749)
 - Transit coordinator monitors and analyzes Sunshine Lamp Trolley system (\$5,478)
 - Implementation the Human Services Transportation Coordination Plan. (\$12,317)

End Products:

- Transit coordinator carries out the daily operations of MAPS.
- Transit coordinator provides MoDOT and FTA with necessary transit data and documentation.

Schedule for Completion:

- Activities will be on-going from November 2009 through October 2010.

Budget:

<u>Total Cost</u>	<u>Federal (80%)</u>	<u>Local Funds (20%)</u>
\$50,061	\$ 40,049 (FTA Sec. 5307)	\$ 10,012 (Joplin)

TASK 5. Long-Range Transportation Plan Update

Objective: An effective Long-Range Transportation Plan (LRTP) that will be used as a guide for making transportation and transit decisions in the Joplin metropolitan area. The LRTP will focus on potential growth to the west, reducing traffic on road corridors, and freight movements.

Current Status: Developing a transportation plan is a required activity for Metropolitan Planning Organizations. LRTP are required to be updated every five years and the last update took place in 2005.

Work Items: MPO staff will advertise and send a request for proposals to qualified consultants wishing to update the LRTP. (\$ 60,000)

End Products: An effective LRTP that will provide a guide for MPO staff, local officials and policy makers involved in making transportation and transit decisions.

Public Participation:

- Prior to adopting the LRTP or a modification to this document, a public meeting will be held by the Policy Board. A notice will be sent seven (7) days in advance notifying the public of a meeting regarding the update of the LRTP. The public is encouraged to comment on the LRTP.

Schedule for Completion:

- JATSO will form a selection committee to review Request For Qualification's (RFQ's), interview consultants, and choose a qualified consultant to update the LRTP in December 2009. A request for RFQ's will be sent out in Mid-November 2009 and the interviews will be conducted at the beginning of December 2009. The selected consultant will be required to complete the LRTP by the end of FY 2010.

Budget:

<u>Total Cost</u>	<u>Federal Funds (80%)</u>	<u>Local Funds (20%)</u>
\$ 60,000	\$ 48,000 (CPG Funds)	\$ 12,000 (Joplin)

TASK 6. Programs, Software & Hardware

Objective: To calibrate the new transportation model and train JATSO staff on how to use the model. The transportation model will aid staff in the transportation planning process.

Current Status: JATSO purchased the TransCAD software at the end of FY 2009. Training for the software and the construction of the transportation model will take place at the beginning of 2010.

Work Items:

- *Calibration and training* – 100% - (\$50,000)

End Products:

- One (1) fully functional transportation model with staff being trained on how to operate this essential planning tool

Public Participation:

- A public meeting will be held sometime in FY 2010 concerning the Joplin MPO transportation model. The selected consultant will give a brief presentation explaining the benefits of the model and future projection forecasts in the MPO using the model.

Schedule for Completion:

- JATSO is interviewing consultants for the construction, collaboration, and training of the transportation model in the first week of August 2009. A qualified consultant will be selected by Mid-August and the construction and collaboration of the transportation model will take place in Mid-November. Two staff members from the City of Joplin and one member of Harry S. Truman Coordinating Council will be trained on model and the TransCAD software by September 2010. Anticipated a fully functional transportation model with staff that can operate the model by the end of FY 2010.

Budget:

<u>Total Cost</u>	<u>Federal Funds (80%)</u>	<u>Local Funds (20%)</u>
\$ 50,000	\$ 40,000 (CPG Funds)	\$ 10,000 (Joplin)

TASK FUNDING SUMMARY

Task	FHWA PL & FTA Section 5303 (CPG) Total Cost	FTA Section 5307	Local	Total Funds
1. Transportation Improvement Program	\$ 5,708	\$0	\$ 1,427	\$ 7,135
2. Unified Planning Work Program – Administration & Operations	\$36,984	\$0	\$ 9,246	\$46,230
3. Geographic Information Systems	\$28,592	\$0	\$ 7,148	\$35,740
4. Transit Planning	\$0	\$40,049	\$ 10,012	\$50,061
5. Long-Range Transportation Plan	\$48,000	\$0	\$12,000	\$60,000
6. Transportation Model	\$40,000	\$0	\$10,000	\$50,000
TOTAL	\$159,284	\$40,049	\$49,833	\$249,166

FHWA PL & FTA Section 5303 Funds (Consolidated Planning Grant) = \$159,284

Local Match (20% of Consolidated Funds-FHWA PL Funds and FTA Section 5303 Funds) = \$38,381

FTA Section 5307 Share = \$40,049

Local Match (20% of Total Task Cost using FTA Section 5307 Funds) = \$10,012

TOTAL JATSO FY 2010 PROGRAM:

The total amount of the Consolidated Planning Grant (CPG) and FTA Section 5307 allocations for FY 2010 is estimated at \$174,845 and \$ 40,049. JATSO is budgeting \$ 159,284 in CPG funds, \$ 40,049 in FTA Sec. 5307 funds, and \$ 49,833 in 20 % local match funds for planning tasks in FY 2010, resulting in an overall program budget of \$ 249,166. The planning programs costs have increased from last year due to the transportation modeling system and the long-range transportation plan.

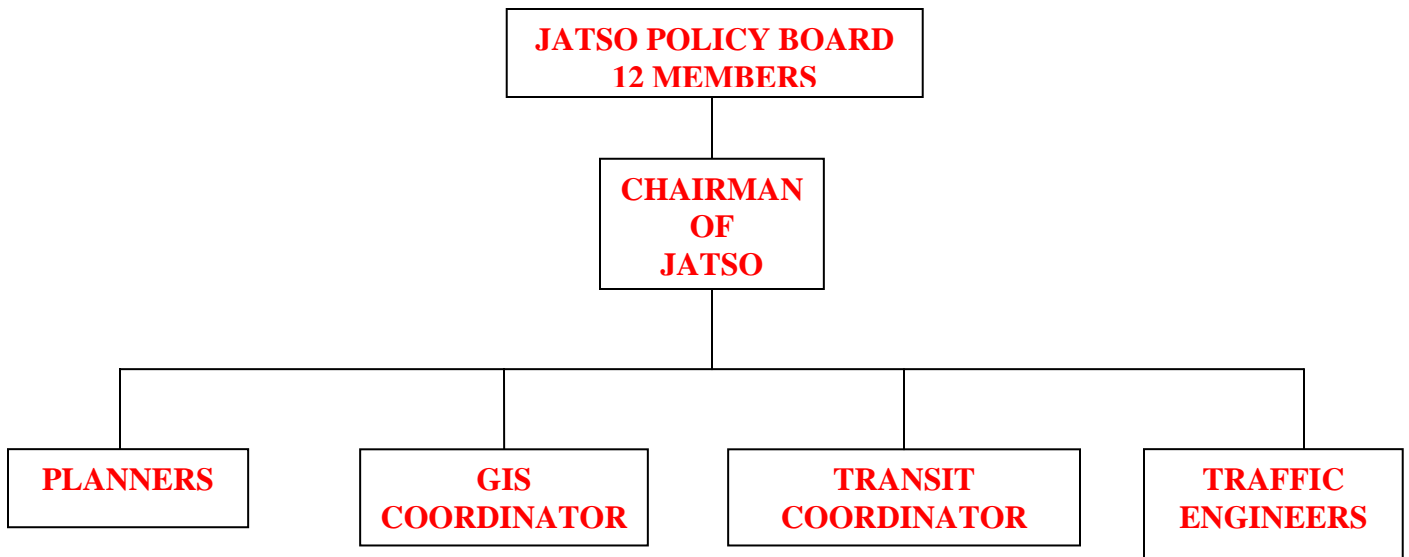
Due to economic climate of the Joplin Area, the JATSO is currently holding unobligated funds of approximately \$ 408,467.15 in reserves. The issues at hand for the MPO are many of the smaller jurisdictions have limited budgets to pay for transportation projects upfront. In addition, the poor economy has caused a reduction in the generated sales tax revenue for the City of Joplin, resulting in budgetary cuts. However, some major eligible planning projects, including the FY 2010 LRTP and the FY 2011 Joplin Comprehensive Plan updates, should significantly reduce the reserve balance.

JATSO deeply appreciates the advice and technical assistance provided by MoDOT, FHWA, and FTA in the course of conducting local planning activities. JATSO recognizes that planning is a multi-faceted activity, requiring knowledge of a variety of subjects. The dedication and cooperative spirit displayed by these agencies is deeply appreciated.

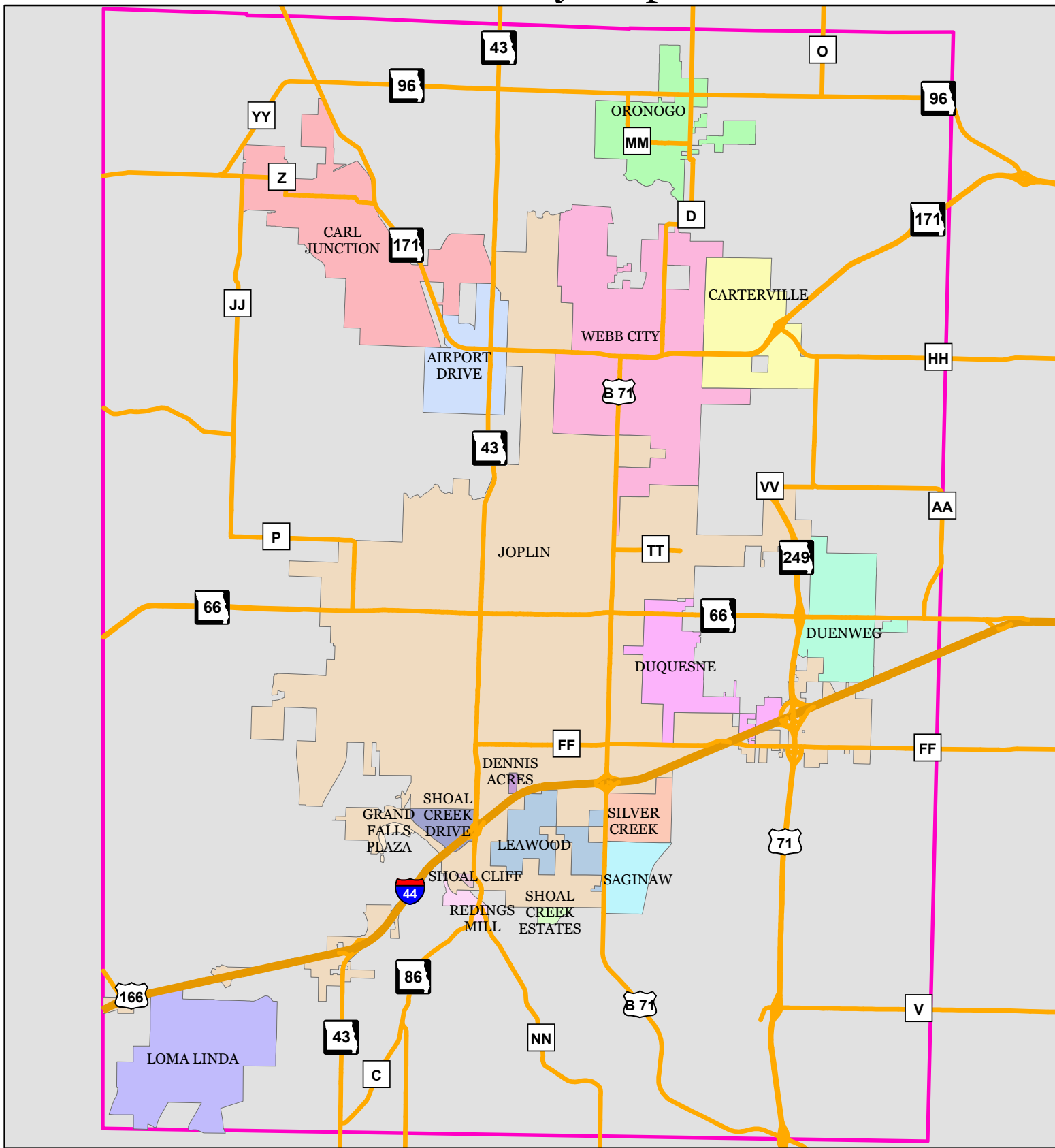
The preparation of this UPWP is financed in part by FTA and FHWA Consolidated Planning Grant funds that are administered by MoDOT.

Joplin Area Transportation Study Organization (JATSO) Organizational Chart

Staff is located at the City of Joplin offices and
are dedicated to JATSO activities



Joplin Area Transportation Study Organization (JATSO) Boundary Map



Legend

State Roads

Road Classifications

Interstates

Highways

Metro Area City Limits

City Name

AIRPORT DRIVE

CARTERVILLE

CARI JUNCTION

DUENWEG

DUQUESNE

GRAND FALLS PLAZA

LOMA LINDA

ORONOGO

REDINGS MILL

SAGINAW

SHOAL CREEK ESTATES

SILVER CREEK

WEBB CITY

DENNIS ACRES

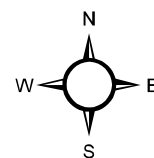
JOPLIN

LEAWOOD

SHOAL CLIFF VILLAGE

SHOAL CREEK DRIVE

MPO Boundary



1 in = 2 miles